

VURA[®]
Time To Build Better

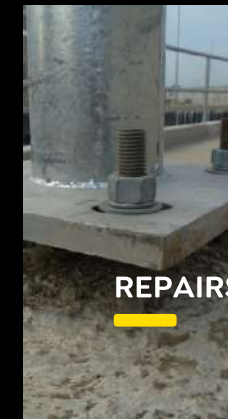
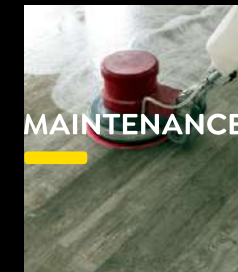
INDIA | UAE | ESTONIA

Vura Bau-Chemie LLP

Regd. Office:
13th Floor, Elite Business Hub, Sola, Ahmedabad 380060, Gujarat, India

Manufacturing Facility:
At Post - Badpura Village, Gandhinagar Vijapur Highway,
Ta: Mansa, Dist: Gandhinagar-382835, Gujarat, India

079 4849 2890 | hello@vura.ae | vura.ae



VURA[®]

Time To Build Better

INDIA | UAE | ESTONIA

PRODUCT
CATALOGUE

A FUTURISTIC BRAND CONCEIVED AND NURTURED WITH THE EXPERIENCE OF 120 YEARS

Vura Bau-Chemie LLP is a global brand that manufactures adhesives, sealants, repairs, waterproofing, maintenance & building products. It has developed a comprehensive product range based on international standards to facilitate global construction chemical and building materials market. The brains behind the product development have a combined experience of more than 120 years in the same industry. With this abundance of experience, the company is ready to build better!

VISION

Become the most innovative, customer-centric, inclusive and sustainable building chemicals company.

MISSION

Believe in core human values like foundation and stability with grow together approach, because our time starts now.

RESEARCH & DEVELOPMENT

We have invested heavily in research and development to create the best quality and a certified product range. With decades of experience, industry knowledge and materials research, we have created a state-of-the-art lab with modern equipment.

OUR PRODUCT CATEGORIES

We develop innovative solutions for each market, using a combination of chemicals, natural and renewable raw materials along with our deep knowledge & expertise in specialized building chemicals which are summarised in the following categories.

- Ceramic
- Waterproofing
- Maintenance
- Repairs

OUR GREEN PROMISE



ONE UNIT = ONE TREE

To design a sustainable world is a fundamental commitment for us. We have adopted this giving back to the planet module of sales, where we plant one tree for every unit of Vura product we sell. With this initiative, we focus on planting trees in environmentally and economically challenged areas.

CERAMIC DIVISION

VURA FasTile™

Ceramic & Gres

POLYMER MODIFIED TILE ADHESIVE

Polymer fibre modified grey cement based adhesive with no vertical slip, suitable for fixing ceramic and gres tiles for floors and walls in internal applications.

CHARACTERISTICS

- For ceramic and gres tiles
- Adjustable
- No vertical slip
- Excellent workability
- Application upto 10mm
- For larger vitrified tiles up to 4 sq.ft.
- Prolonged workability

SCOPE OF USE

- VURA FasTile is a tile adhesive designed for gres tiles and ceramic tiles (glazed, terracotta)
- For vitrified tile size up to 4 sq.ft.
- Indoor use
- On horizontal and vertical surfaces
- On Cement and cement-lime plaster, cement screeds, cement ground coats and concrete

- COLOR** : Grey
- ACHIEVED THICKNESS** : Up to 10mm
- COVERAGE** : As a guide: 1.2kg/m²/mm of thickness (Consumption may vary depending on the evenness on the substrate, trowel notch size, type of tile and the application technique.)
- COMPLIANCE/STANDARD** : CIT as per EN 12004 / ISO 13007 standard
Type 1 T as per IS 15477-2019 standard
- PACKAGING** : 20 Kg bag
40 Kg bag (For project sale only)
- SHELF LIFE** : Until 15 months since the date of production when stored in undamaged dry conditions and original packaging.



CERAMIC DIVISION

VURA FasTile+™

Ceramic & Vitrified



POLYMER MODIFIED IMPROVED TILE ADHESIVE

Cementitious, polymer fiber modified tile adhesive with no vertical slip with extended performance. Suitable for fixing ceramic & vitrified tiles for floor & walls in internal & external application.

CHARACTERISTICS

- Perfect adherence
- Allows installation of tiles from top towards the bottom
- Can be used for tile on tile application
- No Vertical Slip
- Application upto 10mm
- Easily trowelable
- For larger vitrified tiles upto 8 sft

SCOPE OF USE

- **VURA FasTile+** is a tile adhesive designed for vitrified tiles and ceramic tiles (glazed, terracotta)
- For vitrified tile size up to 8 sq.ft.
- Indoor & Outdoor use
- On horizontal and vertical surfaces
- On Cement and cement-lime plaster, cement screeds, cement ground coats and concrete

- COLOR** : Grey & White
- ACHIEVED THICKNESS** : Up to 10mm
- COVERAGE** : As a guide: 1.2kg/m²/mm of thickness
(Consumption may vary depending on the evenness on the substrate, trowel notch size, type of tile and the application technique.)
- COMPLIANCE/STANDARD** : C2 T as per EN 12004 / ISO 13007 standard
Type 2 T as per IS 15477-2019 standard
- PACKAGING** : Grey: 20 Kg 40 Kg bag (For project sale only)
White: 20 Kg bag only
- SHELF LIFE** : Until 15 months since the date of production when stored in undamaged dry conditions and original packaging.



CERAMIC DIVISION

VURA Fastone™

Elastic Universal



POLYMER MODIFIED TILE & STONE ADHESIVE

Universal fibre modified, Thin bed and middle bed adhesive for application of ceramic tiles, vitrified tiles and natural stone on wall & floor in internal and external application.

CHARACTERISTICS

- For ceramic, vitrified (semi and fully) tiles, glass mosaic and natural stone (non-sensitive)
- On balconies, terraces, wet rooms and bathrooms
- On water proof and moisture proof layers
- For inside and outside use
- Longer open time for safer application
- Application Upto 10mm
- For Tile on Tile application

SCOPE OF USE

- **VURA Fastone** adhesive mortar for laying ceramic tile, vitrified (semi and fully) tiles and natural stone (nonsensitive & color fast).
- Indoors and Outdoors.
- **VURA Fastone** mortars can be used in rooms exposed to water.
- It is recommended for floors with elevated functional loads, in shopping malls, staircase.

- COLOR** : Grey and White
- ACHIEVED THICKNESS** : Up to 10mm
- COVERAGE** : As a guide: 1.2kg/m²/mm of thickness
(Consumption may vary depending on the evenness on the substrate, trowel notch size, type of tile/stone and the application technique.)
- COMPLIANCE/STANDARD** : C2TE as per EN 12004 / ISO 13007 standard
Type 3 T as per IS 15477-2019 standard
- PACKAGING** : 20 Kg bag
40 Kg bag (For project sale only)
- SHELF LIFE** : Until 15 months since the date of production when stored in undamaged dry conditions and original packaging.



CERAMIC DIVISION

VURA **FasTone S1**[™]

Super Flexible



DEFORMABLE TILE & STONE ADHESIVE

Deformable cementitious, polymer fibre modified adhesive with improved characteristic, slip resistance and extended open time. High performance adhesive for installing vitrified tiles, large scale tiles, thin tiles and slabs as well as natural stones.

CHARACTERISTICS

- With visible fibres for strength and flexibility balancing substrate deformations on critical surfaces like balconies, terraces, wet rooms, bathrooms, swimming pool and external facade etc.
- For ceramic, vitrified tiles (semi and fully), glass mosaic and natural stone (non-sensitive)
- Suitable for large scale and heavy duty vitrified tiles

SCOPE OF USE

- VURA FasTone S1 is used to laying vitrified tiles (semi and fully), cement and stone tiles, large format and heavy duty tiles, thin tiles, glass mosaics and natural stone on deformable substrate.
- Its features keep elastic connection with substrate which allowed to carry over shear stresses between tile and substrate.
- On horizontal and vertical surfaces

- COLOR** : Grey and White
- ACHIEVED THICKNESS** : Up to 15mm
- COVERAGE** : As a guide: 1.2kg/m²/mm of thickness (Consumption may vary depending on the evenness on the substrate, trowel notch size, type of tile/stone and the application technique.)
- COMPLIANCE/STANDARD** : C2TES1 as per EN 12004 / ISO 13007 standard
Type 4 T S1 as per IS 15477-2019 standard
- PACKAGING** : 20 Kg bag
40 Kg bag (For project sale only)
- SHELF LIFE** : Until 15 months since the date of production when stored in undamaged dry conditions and original packaging.



CERAMIC DIVISION

VURA **FasTone S2**[™]

S2 Premium Flexible



HIGHLY DEFORMABLE TILE & STONE ADHESIVE

Highly flexible, polymer fibre modified special adhesive mortar for installing vitrified and natural stone slabs with high safety reserves.

CHARACTERISTICS

- For use on difficult substrates
- For tile and stones of size more than 1200 x 1200 mm
- For indoor and outdoor use
- Application up to 15mm

SCOPE OF USE

- For the highly load bearing, cavity-free installation of
 - Vitrified tiles and slabs as well as porcelain stoneware and Cotto
 - Cast concrete slabs
 - Natural stones with a low tendency to discolor
 - Glass tiles, glass mosaics and mosaics
 - Synthetic resin bonded slabs (agglomerate slabs).
- VURA FasTone S2 is suitable for indoors and outdoors using the thin- bed or medium-bed method.

- COLOR** : Grey and White
- ACHIEVED THICKNESS** : Up to 15mm
- COVERAGE** : As a guide: 1.2kg/m²/mm of thickness (Consumption may vary depending on the evenness on the substrate, trowel notch size, type of tile/stone and the application technique.)
- COMPLIANCE/STANDARD** : C2TES2 as per EN 12004 / ISO 13007 standard
Type 4 T S2 as per IS 15477-2019 standard
- PACKAGING** : 20 Kg bag
- SHELF LIFE** : Until 15 months since the date of production when stored in undamaged dry conditions and original packaging.





**UNIVERSAL FIBRE FORCE THICK BED TILE ADHESIVE
FROM 3 MM TO 25 MM THICKNESS FOR APPLICATION OF GRES, VITRIFIED
& CERAMIC TILES AND NATURAL STONE ON WALL & FLOOR**

CHARACTERISTICS

- For gres, vitrified and ceramic tiles, natural stone (non-sensitive)
- Can be achieved thickness from 3 mm to 25 mm
- On heated floors, balconies, terraces, wet rooms and bathrooms, Window seals and door seals
- On waterproof and moisture-proof layers For large and small tiles
- Slip resistant
- For inside and outside use
- Longer open time for safer application
- Easy workability thanks to plastified consistency

- COLOR** : Grey and White
- ACHIEVED THICKNESS** : 3 mm to 25 mm
- COVERAGE** : Approx. 1.95 kg/m²/mm of thickness
(Consumption may vary depending on the evenness on the substrate, trowel notch size, type of tile/stone and the application technique.)
- COMPLIANCE/STANDARD** : C2TE as per EN 12004 / ISO 13007 standard
- PACKAGING** : 20 Kg bag
- SHELF LIFE** : Until 15 months since the date of production when stored in undamaged dry conditions and original packaging.



MULTI-FUNCTIONAL, TWO COMPONENT REACTIVE ADHESIVE

For the installation of tiles, natural stones & other special coverings - specially on difficult substrates such as glass, rubber, wood, metal etc. It is PU base high performance and high adhesion fixing with no vertical slip on deformable surfaces.

CHARACTERISTICS

- Able to absorb stresses
- For areas subject to light chemical attack
- Good workability
- The product is classified as **R2T** as per EN12004 and **Type 5T S2** as per IS 15477-2019.
- High elasticity, extremely flexible
- Resistant to ageing
- Highly Thixotropic
- For indoor and outdoor use

SCOPE OF USE

- **VURA Lastik** is used for installing vitrified tiles and slabs, marble, artificial stones (agglomerated stones), natural stone slabs, clinker, porcelain, glass tiles and glass mosaic etc. on floors and walls on absorbent and non-absorbent surfaces.
- Building elements, prefabricated components, profiles made of wood, glass, rubber, pvc and metal.
- **VURA Lastik** is suitable for indoor and outdoor use.
- It ensures a reliable and firm bond, even on difficult substrates like metal, wood, rubber, glass, synthetic resin and coatings – usually without a primer. Thanks to its high flexibility, it can also be used on slightly vibrating surfaces.

- | | | |
|---------------------------------|--|----------------------------|
| COLOR | Part A : White | Part B : Pale brown |
| MIXING RATIO (BY WEIGHT) | : 96 | : 4 |
| PACKAGING | : 4.8kg | : 0.2kg |
| | 5kg (A+B) Bucket | |
| MIXING CONSISTENCY | : Viscous paste | |
| MIXED COLOR | : White | |
| CONSUMPTION | : 1.5 kg/m ² /mm adhesive thickness
(Coverage may vary depending on notch trowel size, surface smoothness and absorption.) | |
| SHELF LIFE | : Until 15 months in original packaging in dry place | |





ULTRA EPOXY PREMIUM

Two – component chemical-resistant epoxy mortar/grout for installation and grouting of tiles, mosaics and stones, where hygiene is of utmost importance such as bathrooms, kitchens, living room, bedroom, hospitals, laboratories, food & beverages industries, dairy industries, swimming pools, showrooms, airports and high traffic areas. It is chemical resistant joint filler and is available in 20 colors.

CHARACTERISTICS

- Optimized UV and weather resistant
- Stable and uniform colors for all types of tiles/stones
- Easy application and cleaning as cementitious grout mortar
- Excellent chemical resistance
- High mechanical strength
- Non Toxic
- Anti-bacterial & Anti-Fungal
- Strong, Durable
- Ideal for waterproof grouting
- Vertical resistance/Slip resistance
- Can be used as a grout mortar and adhesive
- Joint width 1 to 12 mm
- Suitable for the contact with food

SCOPE OF USE

Suitable for chemical-resistant installation and grouting of floor and wall tiles and mosaic in interiors and exteriors with grout joints between 1 and 12 mm wide, such as:

- Floor and wall tiles, stones in general for residential, public and industrial areas
- Floor and wall tiles, stones in bathrooms, showers, swimming pool, tanks, thermal or brackish water, spas and hammams
- Underfloor heating, Kitchen countertops, Terraces and balconies
- Suited for drinking water and food processing applications

The product is compliant R2T & RG as per EN12004/EN13888 & ISO 13007 standards.

	Part A	Part B
MIXING RATIO (BY WEIGHT) :	93	7
PACKAGING	: 1 kg Combo Pack (A+B)	
	0.930 kg	0.070 kg
	: 5kg Combo Pack (A+B)	
	4.650kg	0.350kg
COLOR	: 20 Colors (14 Regular + 6 Special Colors)	
CONSUMPTION FORMULA	: $\frac{(A+B)}{(Ax B)} \times C \times D \times 1.70 = \text{kg/m}^2$	
	A = Tile Length(mm) B = Tile Width(mm)	
	C = Tile Thickness(mm) D = Tile Joint(mm)	
SHELF LIFE	: Until 15 months in original packaging in dry place	



ADHESIVE FOR CONCRETE BLOCKS, AAC BLOCKS, SIPOREX BLOCKS AND FLY ASH BRICKS

VURA FixLoc is a pre-mixed cementitious powder adhesive composed of Portland cement, hydraulic binders, bonding agents, silica sand and special adhesives. It is formulated as a crack free, superior, flexible, high bonding adhesive for AAC Blocks. It can also be used to fix Concrete, Cement blocks, Siporex Blocks and clay bricks to prevent clay absorption of water for adhesive mix. It is a masonry mortar for use in laying bricks, block.

When mixed with water, VURA FixLoc produces a workable mortar that generates, once cured, a high adhesive power between blocks.

CHARACTERISTICS

- Easy to mix and apply, just add water
- High bonding strength
- Flexible, shock and impact resistance
- Crack resistant
- No curing is required
- Can be applied in thin jointing with high adhesion
- Ideal for internal and external application
- Excellent strength and adhesion between panels
- Suitable for hot weather
- Suitable for concrete blocks, AAC blocks, Siporex blocks, Hollow blocks, Cement mortar blocks / bricks

SCOPE OF USE

VURA FixLoc is specially designed for bonding AAC panels. It can also be used for laying Autoclaved Aerated Concrete blocks and clay bricks for internal and external application.

COLOR	: Grey
RECOMMENDED THICKNESS	: 3mm - 10mm
COVERAGE	: Approx. 110-120 sq. ft. per 40 kg bag with 6mmx6mm square notch trowel (Brick size 600x200x150mm) (Coverage depends on thickness of adhesive used & the smoothness, evenness, porosity of the block used.)
PACKAGING	: 40 Kg bag
SHELF LIFE	: Until 15 months since the date of production when stored in undamaged dry conditions and original packaging.





ACRYLIC BASED WATERPROOFING AND REPAIR

VURA AcryStik is a white acrylic based polymer liquid with multipurpose uses to provide flexible cementitious coating system. VURA AcryStik polymer adds to the potential use as well as enhances the properties of cement slurry/mortar/concrete making them excellent choice for use in new as well as renovation work. It is a modified acrylic polymer for coating, bonding agent, repair and priming of reinforce concrete. It is economical and hard wearing system with water resistance property.

USAGE

- VURA AcryStik is used for surface treatment, protecting, and repairing concrete and masonry
- Waterproofing of basements, toilets, terraces, roofs, swimming pools, water towers etc.
- General concrete repairs
- Protection of concrete against corrosion, salt attack etc.
- As a mortar modifier
- As bond coat slurry

RECOMMENDATION MIXING CHART

Application Area	Mixing Properties			
	VURA AcryStik	Cement	Fine Sand	Water
Bond Coat Slurry/ VURA AcryStik Coating	1	2	-	-
Brush Top Coating	1	2	2	-
Mortar Modifier	1	5	15	2

- APPEARANCE** : Milky White Liquid
SOLID CONTENT(%) : 30 ± 2
COVERAGE : For bond coat slurry, as a guide: 40-45 sq.ft. per kg at Mix Ratio of VURA AcryStik : CEMENT - 1 : 2 for one coat Coverage depends on the type of use / application skills, mixing ratio and nature of substrate.
PACKAGING : 1 Kg bottle (1 kg x 8 nos. in a box)
 5 Kg can (5 kg x 2 nos. in a box)
 20 Kg Bucket
 (Bigger packing sizes are available on request)
SHELF LIFE : Until 15 months since the date of production when stored in undamaged dry conditions and original packaging.



RIGID 1-K CEMENTITIOUS WATERPROOFING MORTAR

Single component, cementitious mortar, fibre-reinforced for waterproofing and concrete protection. It has very high water permeability against hydrostatic pressure with standing capacity. It is to be mixed with water and applied by brush or trowel.

CHARACTERISTICS

- Waterproof
- Water permeable
- Suitable for drinking water tanks
- Strong reduction of capillary absorption of water increases surface protection
- Frost resistant
- Economical application
- Can be applied by brush, trowel
- Excellent adhesion to cement surfaces
- Resistant to negative water pressure protects standard concrete structures

SCOPE OF USE

1. Waterproofing

Vura MaStik is used on the horizontal and vertical surfaces of buildings, structural components and tanks.

- Retaining wall
- Basement, foundations
- Drinking water reservoirs
- Bridge decks
- Dams
- Lift shafts / pits
- Interior & Exterior cellar walls
- Irrigation channels
- Damp areas
- Toilet and bathroom sunk areas
- Overhead and underground tanks

2. Concrete protection

3. Hydroslide Effect

- MIXING WATER** : 6 – 6.4 L (30-32%) of water per 20 kg bag
COLOR : Grey
POT LIFE : Apprx. 1 hour
RECOAT TIME : After 4-5 hours
TENSILE ADHESION STRENGTH : ≥ 1 N/mm²
CONSUMPTION : Approx. 1.5 kg/m² per mm of thickness
PACK SIZE : 20 kg Bag
SHELF LIFE : Until 15 months since the date of production when stored in undamaged dry conditions and original packaging.



VURA MaStik+



FLEXIBLE 2K ACRYLIC MODIFIED ELASTOMERIC CEMENTITIOUS WATERPROOFING COATING

VURA MaStik+ is an elastomeric flexible, two component acrylic modified cementitious coating applied by brush, roller or trowel to waterproof concrete, masonry and other construction materials.

CHARACTERISTICS

- Waterproof – Suitable for internal and external waterproofing
- Flexible – Copes with the thermal movement of concrete structures
- Suitable for contact with potable water. Non Toxic
- Excellent adhesion – Bonds to porous and non-porous surfaces

SCOPE OF USE

- Waterproofing of for concrete and masonry
- Waterproofing of Balcony, Roofs, Balcony, sunken floors in bathrooms etc.
- Water-retaining structures subjected to movements
- Basement-waterproofing
- To protect concrete from water, carbonation and deicing salts.

COLOR	: Part A: Grey Part B: White
MIXING RATIO (BY WEIGHT)	: Part A:3 : Part B:1
PACK SIZE (A+B)	: 20kg (A+B) 15kg Powder (Part A) + 5kg Liquid (Part B)
POT LIFE	: 30 minutes
ADHESION TO CONCRETE	
AFTER 28 DAYS	: $\geq 1.50 \text{ N/mm}^2$ (ASTM D 4541)
ELONGATION AFTER 28 DAYS:	$\geq 50 \%$ (ASTM D 412)
TENSILE STRENGTH	: $\geq 1.20 \text{ N/mm}^2$
CRACK BRIDGING ABILITY	: up to 1mm (ASTM C 836)
RECOAT TIME	: After 4-5 hours
CONSUMPTION	: 1.9 kg / m ² per coat to achieve 1mm thickness
SHELF LIFE	: Until 15 months



VURA MaStik Pro



HIGH FLEXIBLE 2-K

VURA MaStik Pro is a two-component high flexible slurry, strengthened with fibres and designed for waterproofing and damp-proofing on deformable and non-deformable mineral substrates – suitable for internal and external use on walls, floors and ceilings.

CHARACTERISTICS

- Highly waterproof
- Flexible
- Crack bridging ability-a 2 mm thick film can cover cracks upto 2mm wide
- Excellent Elongation at failure (>100%)
- Weather and frost resistant
- UV resistant
- Compatible with sealing tape
- Compatible with Ceramic, Vitrified, mosaic Tiles and natural stone coverings
- Can be applied by brush, roller, trowel or mechanical spray
- Protects reinforced & standard concrete structures

SCOPE OF USE

- It can be applied on balconies and terraces (including cantilevered types), permanent and temporary wet rooms, bathrooms, showers, swimming pools, and on walls and floors as a waterproofing layer used underneath coverings associated with tile adhesives.
- It can also be used as a waterproofing and concrete protection. VURA MaStik Pro coating delays the carbonation process for concrete.

COLOR	: Part A: Grey Part B: White
MIXING RATIO (BY WEIGHT)	: Part A:2 : Part B:1
PACK SIZE (A+B)	: 30kg (A+B) 20kg Powder (Part A) + 10kg Liquid (Part B)
POT LIFE	: 60 minutes
ADHESION TO CONCRETE	
AFTER 28 DAYS	: $\geq 1.50 \text{ N/mm}^2$ (ASTM D 4541)
ELONGATION AFTER 28 DAYS:	$\geq 100 \%$ (ASTM D 412)
TENSILE STRENGTH	: $\geq 1.20 \text{ N/mm}^2$
CRACK BRIDGING ABILITY	: up to 2mm (ASTM C 836)
RECOAT TIME	: After 4-5 hours
CONSUMPTION	: 1.65 kg / m ² per coat to achieve 1 mm thickness
SHELF LIFE	: Until 15 months





LATEX FOR WATERPROOFING, BONDING AGENT AND REPAIR

VURA SBR is based on modified styrene butadiene latex supplied as a bonding agent and cement modifier. It reduces shrinkage, prevents cracking, dust pick up & improves abrasion resistance. It is multipurpose & economical product which is easy to use for all your waterproofing and repairs.

USAGE

- Bond coat slurry
- Mortar Modifier
- Concrete Repairs
- Repair Mortar
- Screed / Plaster Enhancer
- For Waterproofing and Repairing

RECOMMENDATION MIXING CHART

Application Area	VURA SBR	Water	Cement	Sand
Bonding Coat Slurry	1		1	
Mortar Modifier	1		2	6
Screed/ Plaster Enhancer	1	1	5	15

- APPEARANCE** : Milky White Liquid
SOLID CONTENT(%) : 20 ± 2
COVERAGE : As a bonding agent, As a guide: 25 - 30 sq.ft./kg per coat (Coverage depends on the type of use / application skills, mixing ratio and nature of substrate.)
PACKAGING : 1 Kg bottle (1 kg x 8 nos. in a box)
 5 Kg can (5 kg x 2 nos. in a box)
 20 Kg Bucket
 (Bigger packing sizes are available on request)
SHELF LIFE : Until 15 months since the date of production when stored in undamaged dry conditions and original packaging.



IMPROVED LATEX FOR WATERPROOFING, BONDING AGENT AND REPAIR

VURA SBR+ is modified styrene butadiene rubber white milky liquid which is high quality latex for multipurpose use. It is specially designed for use as a bonding aid, waterproofing coating and repair of existing structures (used for bonding, repair concrete rendering). It is ideal to apply internal and external applications after mixing with cement. **VURA SBR+** is a high quality emulsion that increases the quality of cement mortar / slurry / concrete / cementitious grout.

USAGE

- As a bonding agent between old and new concrete, mortar, render, screed layers.
- As an adhesion promoter of render over insulation boards and similar materials.
- Waterproof plasters, damp-proof, anti-carbonation/anti-efflorescence coating with cement slurry.
- For making polymer mortar for repair.

RECOMMENDATION MIXING CHART

Application Area	VURA SBR+	Water	Cement	Sand	Aggregates
Waterproofing Coating	1	4	8		
Bonding Coat	1	4	8		
Polymer Mortar/Plaster	1	4	10	40	
Masonry Jointing	1	4	10	60	
Crack Filling	1	4	1	3 (Fine Sand/Marble)	
Polymer Concrete & Screed	1	4	1	1.5	3

- APPEARANCE** : SBR Latex Milky White Polymer
SOLID CONTENT(%) : 43 ± 2
COVERAGE : As a bonding agent, As a guide: 50 - 60 sq.ft./kg per coat (Coverage depends on the type of use / application skills, mixing ratio and nature of substrate.)
PACKAGING : 1 Kg bottle (1 kg x 8 nos. in a box)
 5 Kg can (5 kg x 2 nos. in a box)
 20 Kg Bucket
 (Bigger packing sizes are available on request)
SHELF LIFE : Until 15 months since the date of production when stored in undamaged dry conditions and original packaging.





READY TO USE NON-METALLIC FLOOR HARDENER

VURA DUR is a single component, dry shake, non metallic preblended floor hardener for concrete comprising of cement, specially selected natural mineral aggregates and special additives.

VURA DUR provides a hard wearing and abrasion resistant topping for monolithic floors.

It forms a smooth, dense, anti skid, long lasting and maintenance free floor when sprinkled and trowelled into fresh wet concrete floors.

CHARACTERISTICS

- Single component / Ready to use
- Not metallic & Rust free
- High wear resistance
- High abrasion and Impact resistant
- Cost effective surface hardener
- Makes floor dust proof
- Increase resistance to oils and grease
- Quality assured - factory blending
- ASTM C-109 / IS 1237 Compliance

SCOPE OF USE

- Industrial and Commercial Warehouses
- Logistic Parks
- Factories
- Shopping malls, halls, corridors
- Restaurants
- Museums
- Basement and Parking lots
- Garages
- Service stations
- Public areas

COLOR	: Grey
COMPRESSIVE STRENGTH	: $\geq 50.00 \text{ N/mm}^2$ @ 28 days
SURFACE HARDNESS	: 7-8 (Moh's Scale)
CONSUMPTION	: Application Consumption
	Light Duty 3.0 to 3.5 kg/m ²
	Medium duty 4.5 to 5.0 kg/m ²
	Heavy duty 6.0 to 7.5 kg/m ²

PACKAGING	: 40 Kg bag
SHELF LIFE	: Until 15 months since the date of production when stored in undamaged dry conditions and original packaging.



AVAILABLE SOON

CERAMIC	VURA FastOne S1+ DEFORMABLE FAST SETTING TILE & STONE ADHESIVE	VURA Lastik DW 2K REACTIVE BASED ADHESIVE	
VURA SiGro POLYMER MODIFIED GROUT	VURA SiGro+ IMPROVED POLYMER MODIFIED GROUT	VURA BindCem READYMADE SCREED MORTAR	VURA Enhanso CEMENT SLURRY ENHANCER ADDITIVE
VURA FiSeal WATER BASED FIVE SIDE SEALER	VURA FreeFlow SELF LEVELING UNDERLAYMENT		
WATERPROOFING		VURA NoiStik ACRYLIC BASED SOUNDPROOFING AND WATERPROOFING	VURA PolyStik FLEXIBLE POLYURETHANE WATERPROOFING
VURA KoolStik ACRYLIC BASED HEAT REFLECTIVE WATERPROOFING			
REPAIRS		VURA RokSolid ENGINEERING GROUT FOR FOUNDATION AND STRUCTURE	VURA LiteKro MICRO CONCRETE FOR STRUCTURAL REPAIRS
VURA SuPrima UNIVERSAL PRIMER			
MAINTENANCE		VURA CoreClean TILE CLEANER FOR DUST AND CEMENTITIOUS RESIDUES	